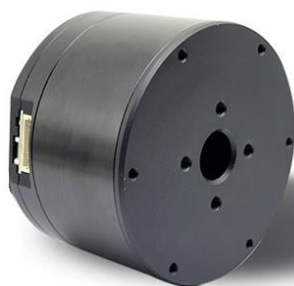
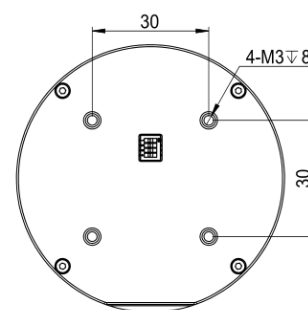
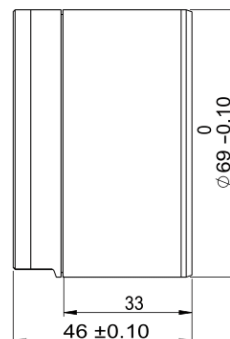
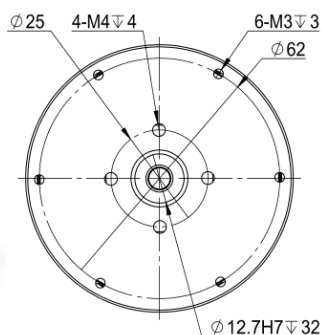


MF7025 v2

DIMENSIONS [mm]



Weight : 540g approx.



MOTOR DATA

Outer Rotor Brushless DC Motor

1	Nominal Voltage	VDC	24	24	24
2	Nominal Torque	Nm	1.6	1.65	1.53
3	Nominal Speed	rpm	975	250	100
4	Nominal Current	A	8.9	3.4	2.0
5	Max Speed	rpm	1300	460	285
6	Max Torque	Nm	11.5	4.2	2.5
7	Max Current	A	71	9.2	3.3
8	Max Output Power	W	280	44	17
9	Speed Constant	rpm/V	54.5	19.6	12.1
10	Torque Constant	Nm/A	0.18	0.49	0.77
11	Winding Type		Y	Y	Y
12	Number of Winding Turns		10	28	45
13	Resistance (phase to phase)	Ω	0.28	2.2	5.8
14	Inductance (phase to phase)	mH	0.24	2.95	7.6
15	Number of Poles			28	
16	Rotor Inertia	gcm ²		1040	
17	Working Temperature	°C		-20~+80	
18	Bearing Nominal Load	N		330	

DRIVER DATA

32-bit MCU / FOC Control / Trapezoidal Acceleration

19	Input Voltage	VDC	7.4~32		
20	Output Current	A	Nominal 9 / Max 15		
21	Encoder		18-bit Absolute Angle-sensing Magnetic Encoder		
22	Communication		RS485 or CAN		
23	Communication Frequency	Hz	RS485 : 500 / CAN : 2000 (based on default baud rate)		
24	RS485 Baud Rate	bps	9.6K, 19.2K, 38.4K, 57.6K, 115.2K(default), 230.4K, 460.8K, 1M, 2M		
25	CAN Baud Rate	bps	125K, 250K, 500K, 1M(default)		
26	Control Cycle		Torque Loop 24KHz / Speed Loop 8KHz / Position Loop 8KHz		

DRIVER INTERFACE PIN ASSIGNMENT

Pin --- B / L	RS485 - B / CAN - L
Pin --- A / H	RS485 - A / CAN - H
Pin --- V-	Power Supply - Negative
Pin --- V-	Power Supply - Negative
Pin --- V-	Power Supply - Negative
Pin --- V+	Power Supply - Positive
Pin --- V+	Power Supply - Positive
Pin --- V+	Power Supply - Positive
Pin --- T	UART Transmitter
Pin --- R	UART Receiver
Pin --- G	Signal GND

MF7025 v2

CHARACTERISTIC CURVE

— Input Current — Efficiency — Output Power — Output Torque

