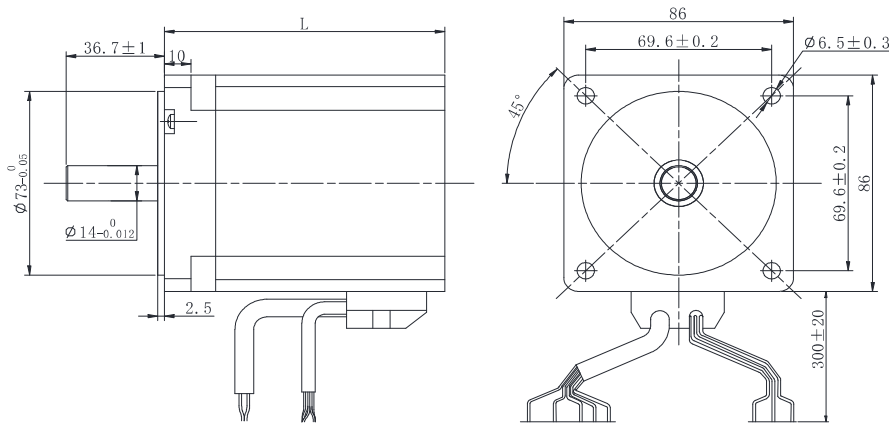


机械尺寸 (Dimensions)



选件 Options



特性概要 (General Specifications)

| | |
|------------------------------|--|
| 绕组连接方式 (Winding Type) | 星形 (Star connection) |
| 霍尔分布角度 (Hall Effect Angle) | 120度电角度 (Electrical Angle of 120 degree) |
| 径向间隙 (Radial Play) | 0.02mm@450g |
| 轴向间隙 (Axial Play) | 0.08mm@450g |
| 最大径向负载 (Max radial force) | 220N距法兰20mm (20mm From the flange) |
| 最大轴向负载 (Max axial force) | 45N |
| 介电强度 (Dielectric Strength) | 600VAC/1S |
| 绝缘电阻 (Insulation Resistance) | 100MΩ, 500VDC |
| 环境温度 (Ambient Temperature) | -20°C ~ +50°C |
| 绝缘等级 (Insulation Class) | Class B |

接线说明 (Electric Connection)

| 引出线型号 Type | 引出线颜色 Color | 功能 Functions |
|---------------|----------------|-----------------|
| UL1430 AWG24 | 红色 (Red) | 霍尔电源正 (Vcc) |
| | 蓝色 (Blue) | 霍尔 U (Hu) |
| | 绿色 (Green) | 霍尔 V (Hv) |
| | 白色 (White) | 霍尔 W (Hw) |
| | 黑色 (Black) | 霍尔电源负 (GND) |
| UL1332 AWG16 | 黄色 (Yellow) | U相 (Phase U) |
| | 红色 (Red) | V相 (Phase V) |
| | 黑色 (Black) | W相 (Phase W) |

电性能 (Electrical Specifications)

| | 单位 (Unit) | FL86BLC64 | FL86BLC77 | FL86BLC105 | FL86BLC125 |
|----------------------------------|-------------------|-----------|-----------|------------|------------|
| 极数 (Number of poles) | | 8 | | | |
| 相数 (Number of phases) | | 3 | | | |
| 额定电压 (Rated voltage) | VDC | 48 | | | |
| 额定转矩 (Rated torque) | N.m | 0.4 | 0.8 | 1.6 | 2.22 |
| 连续运行转矩 (Continuous stall torque) | N.m | 0.48 | 0.96 | 1.92 | 2.66 |
| 额定速度 (Rated speed) | RPM | 3000 | 3000 | 3000 | 3000 |
| 额定功率 (Rated power) | W | 130 | 250 | 500 | 700 |
| 峰值扭矩 (Peak torque) | N.m | 1.2 | 2.4 | 4.8 | 6.66 |
| 峰值电流 (Peak current) | A | 10 | 17 | 36 | 51 |
| 线电阻 (Line to line resistance) | ohms@20°C | 1 | 0.34 | 0.14 | 0.1 |
| 线电感 (Line to line inductance) | mH | 1.4 | 0.6 | 0.36 | 0.24 |
| 转矩常数 (Torque constant) | N.m/A | 0.122 | 0.149 | 0.135 | 0.131 |
| 反电势 (Back EMF) | Vrms/KRPM | 9 | 11 | 10 | 9.7 |
| 转动惯量 (Rotor inertia) | g.cm ² | 400 | 800 | 1600 | 2400 |
| 机身长度 (Motor length) L | mm | 64 | 77 | 105 | 125 |
| 重量 (Weight) | Kg | 1.5 | 1.85 | 2.7 | 4 |